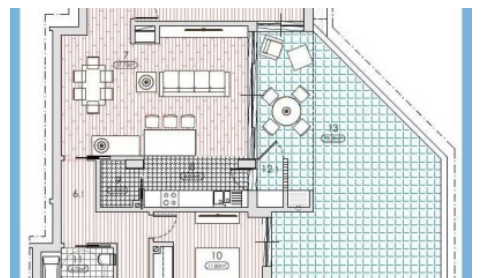
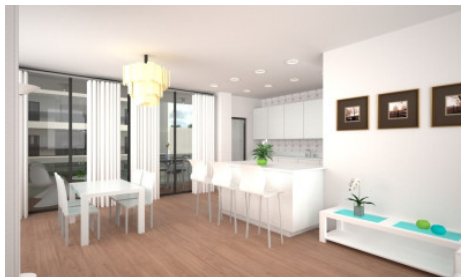




Appartement São Brás de Alportel

€ 331,000

Ref: 1009-2255-A



Appartement São Brás de Alportel



3



2



125m²



Appartement São Brás de Alportel

€ 331,000

Ref: 1009-2255-A

Appartement São Brás de Alportel

Fantastic and very spacious with a contemporary design, excellent quality finishes and close to the city center.

This apartment has a wonderful terrace with 74,35 sqm, essential for relaxing and socializing with family and friends. Book yours now!

This development is located in a quiet area, but with all facilities and services close by, as well as museums, gardens and schools.

Caractéristiques

- ✓ Classe énergie: A+
- ✓ Garde-manger
- ✓ Égout
- ✓ Année de construction: Pré-51
- ✓ Cuisine équipée
- ✓ Grenier
- ✓ Situation calme
- ✓ Système central de musique
- ✓ Situation centrale
- ✓ Cheminée à foyer fermé
- ✓ Hydrothérapie Bath
- ✓ Porte de sécurité
- ✓ Machine à laver
- ✓ Machine a laver la vaisselle
- ✓ Orientation solaire: Nord, Sud
- ✓ Plancher flottant
- ✓ L'eau du robinet
- ✓ Climatisation pré installation
- ✓ Proximité: Centre commercial, Restaurants, Pharmacie, Transports publiques, Terrain de jeux
- ✓ Entraînement unidirectionnel
- ✓ Armoires encastrées
- ✓ Cheminée
- ✓ Terrasse
- ✓ Sous-sol
- ✓ Stockage
- ✓ Vue: Vue sur la campagne, Vue sur la ville
- ✓ Système d'entrée vidéo
- ✓ Ascenseur
- ✓ Garage
- ✓ Land zoning: Agglomeration urbano
- ✓ Contemporary
- ✓ Car port
- ✓ Electric gates
- ✓ Paineis Solares
- ✓ Double vitrage
- ✓ Stores Electriques
- ✓ Porte de garage électrique
- ✓ Aspiration central